



AluFrame Assistant

for **SOLIDWORKS**

More information:
www.klietsch.com/solidworks



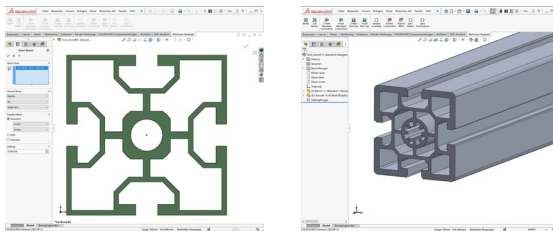
Aluminium profile design with SOLIDWORKS

AluFrame Assistant is a parametric 3D CAD software solution which is integrated into SOLIDWORKS by 100%. With the powerful and user-friendly design functionalities for aluminium profiles and connections of different well-known manufacturers there are no limits to your creativity.

Create complex designs including the typical connection parts with or without boreholes fast and efficient.

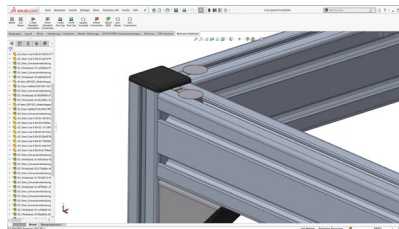
Comfort was very important for the design process. With AluFrame Assistant for SOLIDWORKS the typical connections can be placed within some seconds. Additionally all the necessary things like boreholes or profile trims will be done automatically.

Beside the standard connections of the different manufacturers it is possible to add connections to any degree of complexity. This is a one-time process and afterwards the connection is available in the library. So you are not limited to single manufacturers or given ways of design.



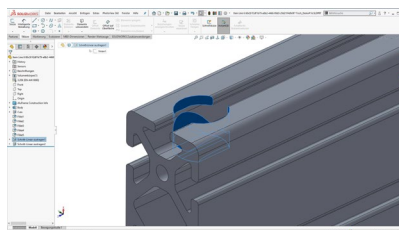
Profiles, Libraries and Cuts

- Can be equipped with profiles from all manufacturers
- Own profiles can be created quickly
- Profile catalogs from various manufacturers can then be downloaded free of charge from our website



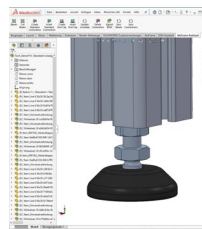
Standard Connections

- Standard connections can be added into the design with just a few clicks
- The software suggests all the connections stored in the database that match the profile manufacturer and the slot size
- After selecting and positioning the connection, all parts are placed fully automatically, subassemblies are created and any necessary machining (e.g. drilling) is performed



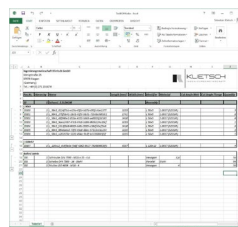
Intelligent databases

- The AluFrame Assistant has a self-learning database, it is an ease to teach-in a new connection
- After one-time manual placement of a joint, the database automatically learns profile type, slot size, position and user-defined properties
- Thus, the connection will be placed automatically in the future, and additional information (e.g. order numbers) will be managed



Wheels, feet and end caps

- Automated placement of wheels, feet, end caps and similar components
- Convenient positioning of components at the start or end of the profile
- Any necessary processing is automatically carried out on the profiles and the user-defined properties of the component are written



Individual bills of material

- Parts lists can be exported to Excel
- Completely individual templates
- Assignment of item numbers automatically or manually
- Countless setting options round off this process
- Templates used were set up in a clear XML scheme and can be created independently

